



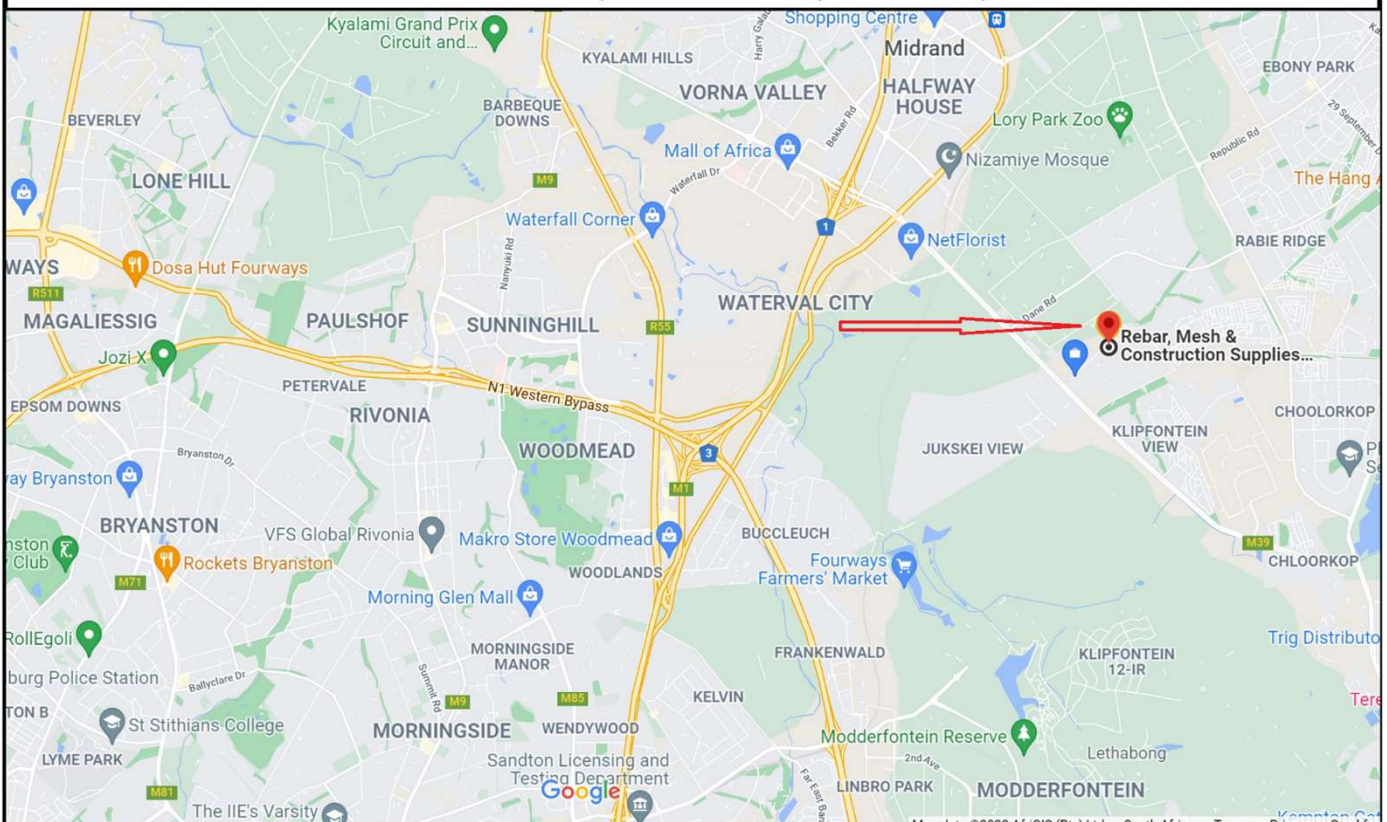
## About Our Construction Accessories, Tools & Equipment

Rebar, Mesh and Construction Supplies (Pty) Ltd is the number one supplier of accessories, specialised tools and equipment to the construction industry in Africa. We carry a large variety of rebar spacers, rebar cutters and benders, lifting equipment, safety netting, rubble chutes, brick baskets, daga mixing trays, waterproofing membranes, joint formers, shutter strip formwork joint sealer, K-Form screed rails and much, much more. Browse our website and you will be surprised to see what products we offer to make your job a lot easier on site.

Products from Rebar, Mesh and Construction Supplies (Pty) Ltd have been used in some of the largest projects in South Africa and the African Continent.

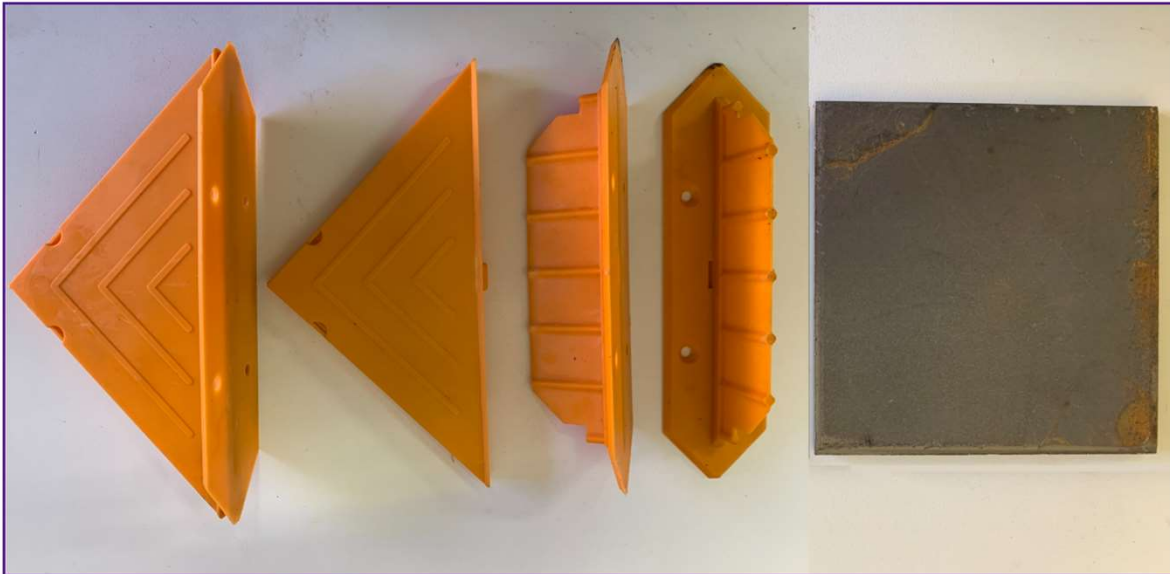
Contact us now on +27 11 310 8660 or +27 11 310 7113. You can also email us on [sales@rmcs.com](mailto:sales@rmcs.com)

### 571 Setter Road, Commercial, Midrand, 1683



## About Our Diamond Dowels

Rebar, Mesh and Construction Supplies (Pty) Ltd t/a RMCS supplies a Diamond Dowel System which is a modern and innovative way to balance and control shear load transfer at the joints of concrete slabs.



### WHY USE THE DIAMOND DOWEL SYSTEM

Acceptable floor joints can only be achieved by using a concrete dowel system. Originally the installation of joint systems for warehousing or industrial flooring was completely ignored, or the systems installed did not work as they should. By not installing a proper and acceptable joint system, there is a very high probability that joints will deteriorate as soon as the slab settles or as soon as weight is transported over the joint.

Problems with joints are usually a huge problem, specifically where industrial floors are concerned. The solution to the problem is to install the RMCS Diamond Dowel System.

It normally takes very little extra effort to install the Diamond Dowel system, resulting in huge benefits in the long run.

### THERE ARE THREE COMPONENTS TO THE DIAMOND DOWEL SYSTEM



Reusable base or insert

The sleeve

The steel diamond plate

These components are sold individually or as a complete set.

### Installing the RMCS DIAMOND DOWELS only takes a few steps:

1. Screw, nail or rivet the plastic re-usable base plate to the formwork.
2. Install the triangular sleeve over the reusable base or plate.
3. Pour concrete for the section where diamond dowels have been installed.
4. Before the adjacent concrete is poured, insert the steel plate into the sleeve.

The reusable base or insert, must always be cleared of concrete from the previous use, before reuse.

Contact us now on +27 11 310 8660 or +27 11 310 7113. You can also email us on [sales@rmcs.com](mailto:sales@rmcs.com)

## About Our Rubble Chutes

Rubble Chutes are the perfect way to remove rubble or household waste safely from multi-storied buildings to the rubble dump or waste container.



The Rubble, Waste or Safety Chute consists of two parts, namely:

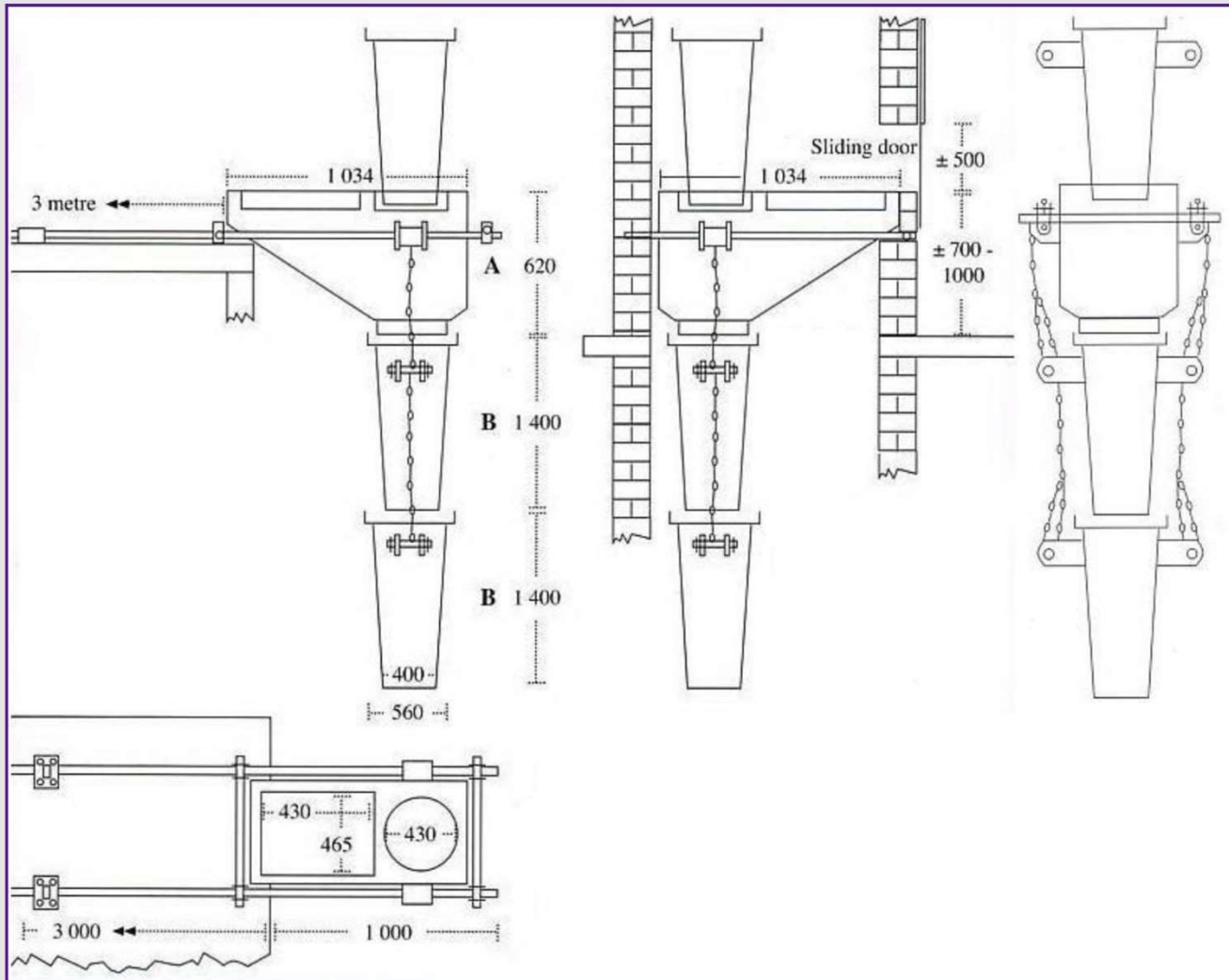
- **The Receiver** which is located on the appropriate floor or level of the building where the rubble or waste is generated.
- **The Chute** which guides the waste as it falls to a safe area on the ground or skip.

### Features and Benefits:

- Made from durable Polyethelyne
- No corrosion or rust
- Versatile
- Minimum noise levels
- Easy to install
- Promotes safety on any building site



## How to put our Rubble Chute system together



**Rubble or Waste Receivers** are placed in line, but on different floors.

**The Chute Receivers** must be anchored on every second floor with a Waste Receiver to ensure safety and stability. A maximum of 4 to 5 chutes per receiver is specified and this specification must be adhered to.

**The Rubble Chutes** are extended by linking numerous chutes together until the required height is reached.

**Fittings supplied with Receiver / Chute:**

2 x 5mm x 1,2 meter chains

**Fittings not included, but also supplied by RMCS:**

2 x 4 meter Scaffold Tube

2 x 1 meter Scaffold Tube

4 x (50mm x 50mm) bands with back plate eyebolt

2 x Swivel Coupler with base plate

## About Our Yellow and Orange Barrier Netting

RMCS supplies top quality orange and yellow barrier netting for a wide range of applications in the construction industry. Our well weaved for extra strength barrier netting has the following characteristics:

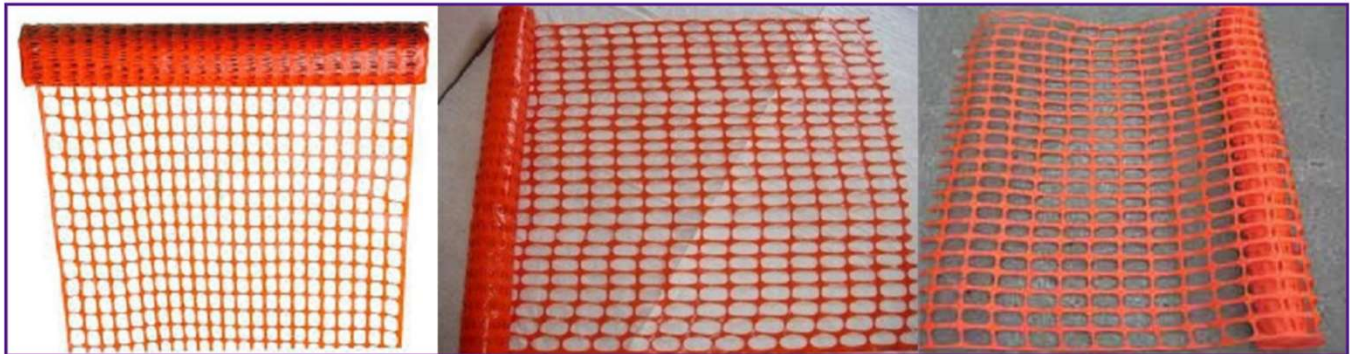
- drawstrings for easy attachment to stakes
- bright orange and yellow for clear visibility
- colour fast UV protection
- flexible and durable
- flameproof and chemical resistant

**Top Quality Barrier Netting (1 Meter high x 50 Meter long)**



## About Our Orange Safety Netting

**Top Quality Orange Safety Netting (1m or 1,2m high x 50 Meter long)**



## Applications

Our well manufactured, extra strong and visible quality barrier and safety netting is used in a wide range of applications in the construction industry, such as:

- Construction sites,
- work sites,
- open excavations,
- sport events,
- catwalks,
- crowd control and
- restricted areas.

## About Our Scaffold Hoists or Brick Baskets



Our Brick Basket / Scaffold hoist are the perfect way to hoist bricks, cement and other building materials safely up to floors of a multi-level structure.

**Outer dimensions:**

1,220mm (L) x 1,010mm (W) x 788mm (H)

**Inner dimensions:**

1,130mm (L) x 920mm (W) x 640mm (H)

**SABS Tested**

SABS test carried out on one 850 kilogram SWL double skin polyethylene pallet bin (scaffold hoist) with a foam filled cavity to 1,25 times the SWL of 850 kilograms, ie. 1,062,5 kilograms.

**Method of test**

- The load was determined using a 100 kN HBM load cell and overhead crane.
- The pallet bin (scaffold hoist) was suspended and load applied to the bin via sand until the required proof load of 1,062 kilograms was attained.
- Visual examination was carried out during and after the application of the load to detect visible defects.

**Results**

The pallet bin (scaffold hoist) was subjected to a load of 1,077 kilograms ie. > 1,25 times the SWL OF 850 kilograms, without incurring any visible deformation.

Contact us now on +27 (0)11 310 8660, +27 (0)11 310 7113 or +27 (0)72 459 7063. You can also email us at [sales@rmcs.com](mailto:sales@rmcs.com)

## About Our Cement and Daga Mixing Trays

Our Cement and Daga Mixing Trays are ideal for mixing cement/daga without ground stains.

They are easy to clean and extremely durable.

### Cement Mixing Trays



**Cement Mixing Tray Dimensions:**

**Length:** 890mm

**Width:** 890mm

**Height:** 300mm

### Daga Mixing Trays



**Daga Mixing Tray Dimensions:**

**Length:** 660-550mm

**Width:** 660-550mm

**Height:** 130mm

**About Our Joint Former Lightweight, cross-linked, closed cell, expanded Polyethylene joint former**

Joint former is lightweight and used as an expansion / contraction joint former. Joint former is a lightweight, cross-linked, closed cell, expanded Polyethylene joint former. It has particularly good compression qualities with remarkable recovery capacity and is chemical and water resistant. Glue Joint former onto concrete face and cast next section of concrete. A neat and even joint will be formed. Doesn't need bond breaking strip and is compatible with silicone.



**DIRECTIONS FOR USE**

- Ensure all concrete surfaces are free from base grit and dust.
- Apply glue in vertical strips ± 100 mm wide and 25 mm from the top to avoid the tear-off strip from sticking to the concrete face.
- Allow the glue to dry (according to manufacturer's instructions) and then stick Joint former onto the glued concrete face.
- Cast the next section of concrete as required. Take care not to let the wet concrete get behind Joint former as this will result in a wavy joint.
- When the joint sealant is about to be applied, simply peel the tear-off strip out of the formed joint, leaving an even groove of uniform depth for filling with sealant.

**Please Note:** In conjunction with water retaining structures, Joint former must NOT be used where the water head is in excess of 3 metres.

**The correct size to be used depends on the condition of the formwork or type being used:**

**JOINT FORMER PRODUCT CODES AND SIZES**

Product Code	Foam Colour	Width (mm)	Thickness (mm)
JT50	White	50	10
JT80	White	80	10
JT90	White	90	10
JT100	White	100	10
JT110	White	110	10
JT115	White	115	10
JT120	White	120	10
JT125	White	125	10
JT150	White	150	10
JT170	White	170	10
JT175	White	175	10
JT180	White	180	10
JT190	White	190	10
JT200	White	200	10
JT220	White	220	10
JT230	White	230	10
JT250	White	250	10
JT280	White	280	10
JT300	White	300	10
JT340	White	340	10
JT400	White	400	10

**ADVANTAGES**

- Joint former has good compression qualities with good recovery capacity.
- Joint former is supplied with a hinged temporary blocking piece, leaving a clean, neat and perfectly sized groove providing a consistent depth channel for joint sealant.
- Joint former is cut to size, eliminating wastage and cutting on site.
- The Joint former material is flexible and can be used around corners.
- Joint former Excellent resistance to chemicals.
- Joint former is waterproof, does not disintegrate, rot or swell.
- No bond breaker required.



## About Our Shutter strip Self-adhesive Polyurethane shutter sealing foam strip

Shutter strip is used as a sealing strip for the prevention of grout loss through but joints in metal or wooden formwork. It is made of a polyurethane foam with a adhesive backing strip.



### DIRECTIONS FOR USE

- Ensure that the sides of the shutter panels are free of dirt, base grit, dust or grease oil.
- Apply Shutter strip to the side of the panel by peeling off the release paper and sticking the self-adhesive side to the panel.
- Place the next shutter panel in position firmly against the Shutter strip to ensure that the foam is compressed.

**The correct size to be used depends on the condition of the formwork or type being used:**

### JOINT FORMER PRODUCT CODES AND SIZES

Product Code	Foam Colour	Width (mm)	Thickness (mm)
GS5x20	Grey	5	20
GS10x20	Grey	10	20
GS15x20	Grey	15	20
WS5x20	White	5	20
WS10x20	White	10	20
WS15x20	White	15	20

### ADVANTAGES

- Self-adhesive backing makes our foam seal easy and clean to use.
- Supplied in various widths and thicknesses.
- Water based acrylic adhesive makes Shutterstrip easy to remove after use.

### PHYSICAL PROPERTIES / TECHNICAL DATA

Composition:	Self-adhesive, open cell Polyurethane foam.
Colours:	Grey or White.
Density Grey:	22 - 24 kg/m <sup>3</sup> .
Density White:	5mm width = 23 kg/m <sup>3</sup> & 10 & 15mm width = 20 kg/m <sup>3</sup> .
Roll size:	10 meters.

Contact us now on +27 (0)11 310 8660, +27 (0)11 310 7113 or +27 (0)72 459 7063. You can also email us at [sales@rmcs.com](mailto:sales@rmcs.com)

## About Our Hoop Iron

Our **Hoop Iron** is manufactured from SABS-quality galvanised steel of varying thickness depending on individual needs or architects specifications.

**Hoop Iron** is mainly used to brace trusses and to secure trusses to the top of the wall of a structure, but it may also be used for various other applications in the building & construction industry.



### Hoop Iron can be used for the following applications:

1. To brace and secure roof trusses to a structure,
2. Casting Hoop Iron into a structure during concrete pour,
3. Caulking Hoop Iron into a drilled hole with epoxy resin or
4. Fixing Hoop Iron with quick setting cement.

Our galvanised Hoop Iron is resistant to corrosion from acids, alkalis and chemicals. The load strength of our Hoop Iron is greater than 3.6kn and they have a pull-out strength of 1.8kn.



### HOOP IRON PRODUCT CODES AND SIZES:

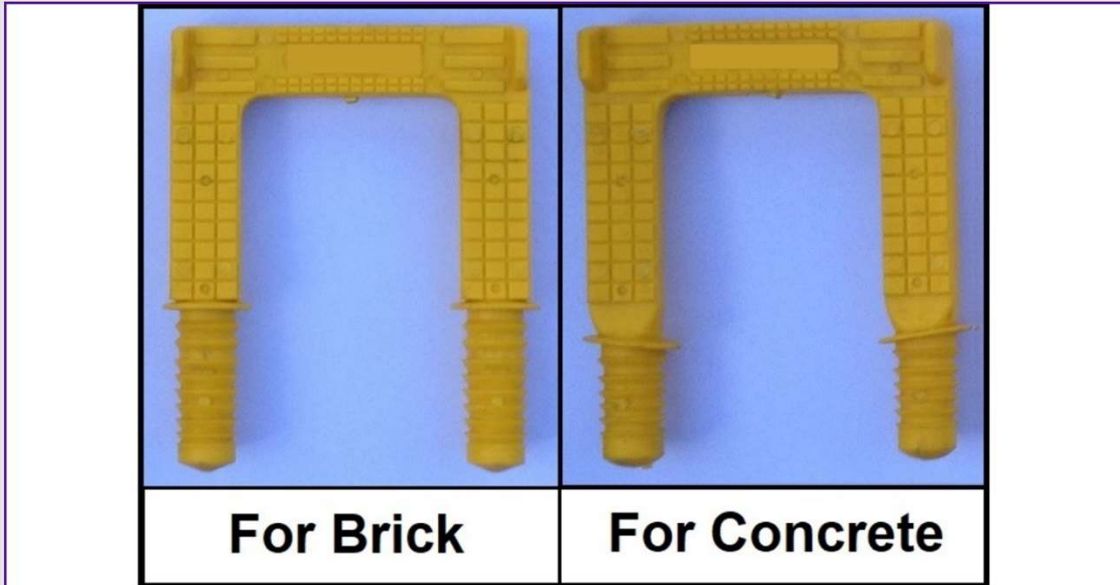
Product Code	Product Description	Width	Thickness	Weight per Coil
HOOP IRON 3212	HOOP IRON 32MM X 1.2MM	32mm	1,2mm	from 19,7 to 20kgs
HOOP IRON 3216	HOOP IRON 32MM X 1.6MM	32mm	1,6mm	from 25,3 to 25,6kgs

Contact us now on +27 (0)11 310 8660, +27 (0)11 310 7113 or +27 (0)72 459 7063. You can also email us at [sales@rmcs.com](mailto:sales@rmcs.com)

### About Our Step Irons

Our Step Irons are used in sewers, drainage manholes or pits. Our step irons are manufactured from high strength steel bar and are fully encapsulated in tough yellow polypropylene for visibility underground. There are no sharp edges or corners on these step irons and the 25mm sides stop feet slipping off.

Our step irons are resistant to corrosion from acids, alkalis and chemicals. Load strength is greater than 3.6kn and they have a pull-out strength of 1.8kn. They can be set into pre-cast structures during concrete pour, caulked into a drilled hole with epoxy resin or fixed with quick setting cement.



**STEP IRON PRODUCT CODES AND SIZES:**

Product Code	Product Application	Width mm	Length mm	Thread Length mm
SI1	Brickwork	150mm	185mm	70mm
SI2	Concrete	150mm	185mm	50mm

## About our KFORM Screed Rail System

See how it works on our KFORM website <http://www.kformsouthafrica.co.za>.



K-FORM UPVC Screed Railing provides the construction industry with an economical, efficient and environmentally friendly alternative to steel and timber formwork.

### Specification

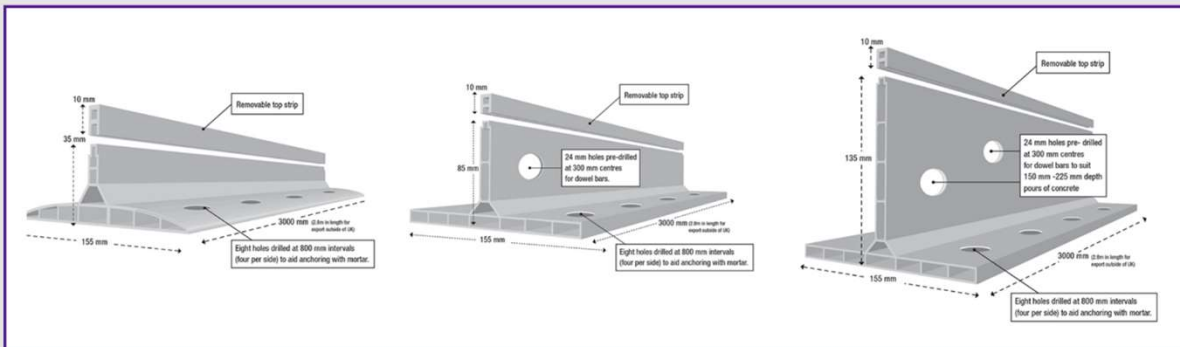
- Allows increase in height of 25mm
- Integrates seamlessly with K-FORM Screed Rails
- Compatible with K-FORM top strip
- Fast and easy clip on design

The K-Form Concrete Formwork System offers a revolutionary and innovative shuttering product that saves the building contractor time and money.

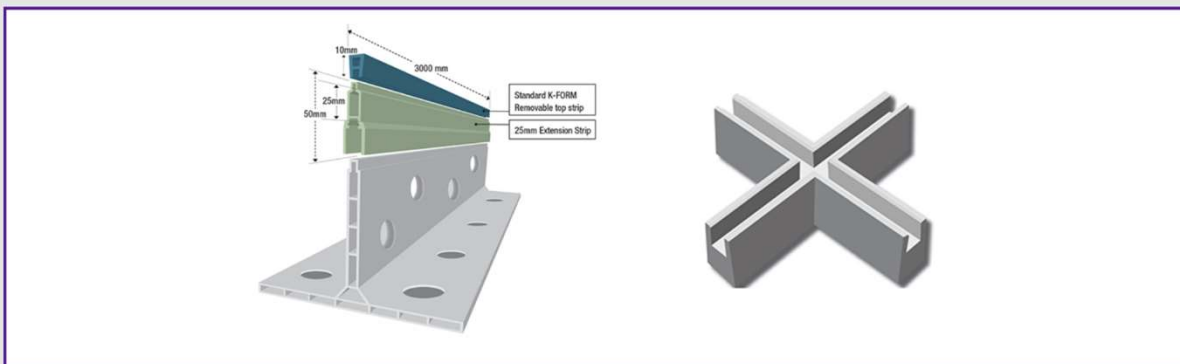
The K-Form plastic concrete shuttering system is so simple and fast to set, just one person can lay several hundred metres of screed rail in an hour.

The K-Form Concrete Formwork System has been utilised by hundreds of customers.

Available in three different sizes suitable for a wide range of specification and applications with a range of accessories to fit your project requirements.



Top Strip Angle Joints integrate seamlessly with K-FORM K85 and K135 Screed Rails. They provide a clean and tidy joint detail at intersections and should be used when it is intended to leave the topstrip in place 155 mm after pouring



## About Our Rebar Spacers

Rebar, Mesh and Construction Supplies (Pty) Ltd manufactures all its rebar spacers or cover blocks at our manufacturing facility at 571 Setter Road, Commercia, MIDRAND.

Our plastic rebar spacers, or cover blocks are made from the best recycled plastic materials. This is our contribution to rid the world of plastic waste. Our recycled raw materials are quality checked on a regular basis and only the best recycled materials are used.

Our concrete or fibre cement rebar spacers / cover blocks are made using only 42,5 strength cement from Afrisam or Lafarge. Fibre is added to our special concrete mix. Our concrete mix was designed to ensure maximum concrete strength. All our concrete rebar spacers contain fibre. Our curing process has been developed over many years. Regular tests are performed by certified concrete Labs, to ensure that only the best quality concrete rebar spacers are delivered to our customers.

**Ask for a copy of our Rebar Spacers Catalogue to see the variety of spacers we have available?**



Contact us now on +27 (0)11 310 8660, +27 (0)11 310 7113 or +27 (0)72 459 7063. You can also email us at [sales@rmcs.com](mailto:sales@rmcs.com)

## About Our Rebar Fixing Wire

Our rebar tying or fixing wire, concretors nippers or rebar tying pliers as well as large variety of portable rebar cutting and bending equipment, makes the placement of rebar as simple as possible. Contractors will be allowed to not only cut and bend rebar in-situ and on site, but place and fix rebar as efficiently as possible.

## About Our Black Annealed and Galvanised Fixing or Tie Wire



We sell our 1.6mm black annealed rebar fixing wire or tie wire in 50 Kilogram rolls. The diameter of the rebar fixing or tie wire is 1.6mm. You are advised to always use our branded fixing pliers or concretors nippers, to tie the rebar.

## About Our 1.2mm Galvanised Fixing or Tie Wire



We sell our 1.2mm galvanised wire in 50 Kilogram rolls. The diameter of the rebar fixing or tie wire is 1.2mm.

## About Our Concretors Nippers or Rebar Tying Pliers



Our branded Concretor Nippers are made in Germany. In addition to our own RMCS branded rebar fixing pliers, we also stock Knipex fixing pliers. They are robust and durable and are rated very highly by our customers. The main application for our branded Concretors Nippers is twisting and cutting off tie wire or binding wire, when fixing or tying rebar into place.

Our branded nippers are also suitable for various other work with wire. A typical feature is the short head and the long, slim shanks on the pliers, which make it possible to turn our them easily and quickly.

Our range of Concretors Nippers open and close smoothly and have very precise cutting edges, which also cut soft wire with spring.

## Also have a look at our Knipex Fixing Pliers as well as our Black Annealed and Galvanised Binding wire

Contact us now on +27 11 310 8660 or +27 11 310 7113. You can also email us on [sales@rmcs.com](mailto:sales@rmcs.com)